

DEAN JANVIER

Owner & President, HANESHE LP

T: 780.545.6655

E: Dean.Janvier@haneshe.com

Dean Janvier is a Dene citizen and lives in the community of Cold Lake First Nations in northeastern Alberta. He has more than 20 years of experience in the areas of First Nations and Canadian politics, Indigenous policy, corporate relations and communications. For more than ten years, Dean worked at the Assembly of First Nations with Indigenous leaders from across Canada. Dean has also held key business development roles with the Cold Lake First Nations group of companies.

TREVOR CUTHBERT, MSc, PMP

Project Manager, HANESHE LP

T: 403.299.6451

E: Trevor.Cuthbert@haneshe.com

Trevor is based in Calgary, Alberta, and has 14 years of experience managing environmental baseline, regulatory permitting and environmental compliance projects for planned and operational oil & gas, power, and other industrial developments in western Canada.



GOLDER

HANESHE
Creating New Beginnings
in the Land and its Peoples

Janvier

Image provided courtesy of Janvier Gallery, www.alexjanvier.com



Haneshe LP is an Indigenous company offering a comprehensive range of environmental services for the oil and gas, mining, and infrastructure sectors.

SERVICES

Environmental project management: including Indigenous participation in sub-contracting and direct employment opportunities.

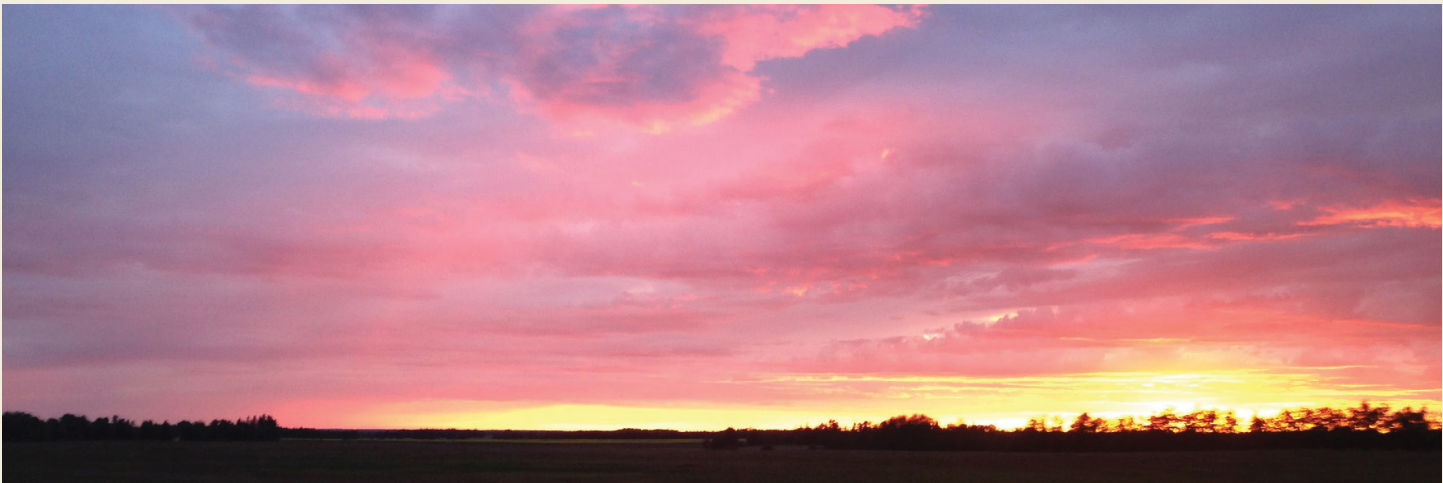
Reclamation and Remediation: from site assessment to reclamation certification, our team works closely with clients to overcome environmental challenges through site-specific mitigation measures and implementation.

Indigenous Participation and Training: we assist our clients in maximizing opportunities for Indigenous communities and businesses by developing project-specific participation plans.

Environmental Planning and Permitting Services: we provide fully integrated environmental and ground engineering* services to meet your project’s regulatory requirements and environmental goals. We help our clients minimize risk towards achieving sustainable development.

Indigenous Engagement and Consultation: engagement with Indigenous communities involves gaining trust and building understanding by sharing information in an honest, respectful and meaningful way. We offer our clients clear pathways for engaging with the communities connected to their projects.

Strategic Planning and Infrastructure: we work in collaboration with communities to assess infrastructure needs, evaluate options and identify funding sources. From transportation and land development to water and waste management, we provide the environmental and ground engineering* services needed for project approval, construction and operation.



ABOUT HANESHE

Haneshe LP is a majority Indigenous-owned environmental services firm based in Cold Lake First Nations.

As a partner, Golder Associates operates Haneshe LP and provides specialized technical expertise and project management services as local capability and capacity grows.

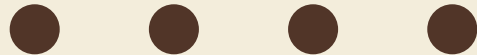
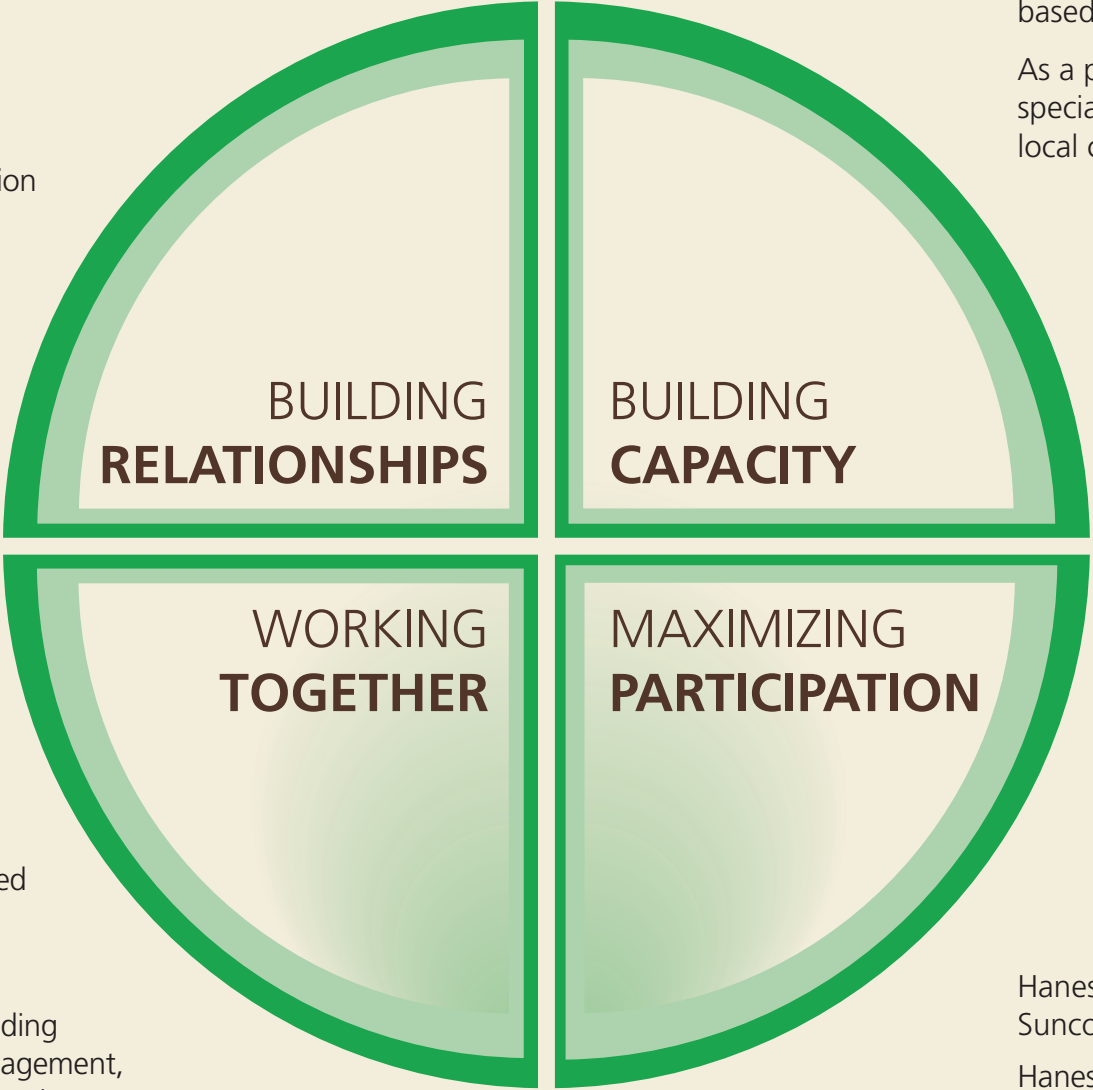
Haneshe integrates technical expertise with Indigenous knowledge and values to deliver sustainable, innovative solutions to our clients.

We work in partnership with Indigenous communities to:

- Provide professional cost-effective turn-key environmental services;
- Maximize opportunities and benefits for both Indigenous communities and industry clients by increasing contracting, training and employment on every project
- Build a strong health and safety culture for sustainable business and employment relationships;
- Develop training programs to increase capacity for Indigenous employment opportunities on major resource development projects; and
- Work with Indigenous communities to develop long-term employment opportunities that lead to careers in environmental services.

Haneshe has successfully performed projects with clients such as Enbridge, Suncor, AltaLink, Cenovus, Nextbridge, Imperial Oil, and others.

Haneshe is committed to upholding Health, Safety and Environment (HSE) as a core organizational value that defines who we are and is embedded in all that we do. HSE is considered first and is embedded in how we work.



* Ground engineering services provided by Golder Associates Ltd.

